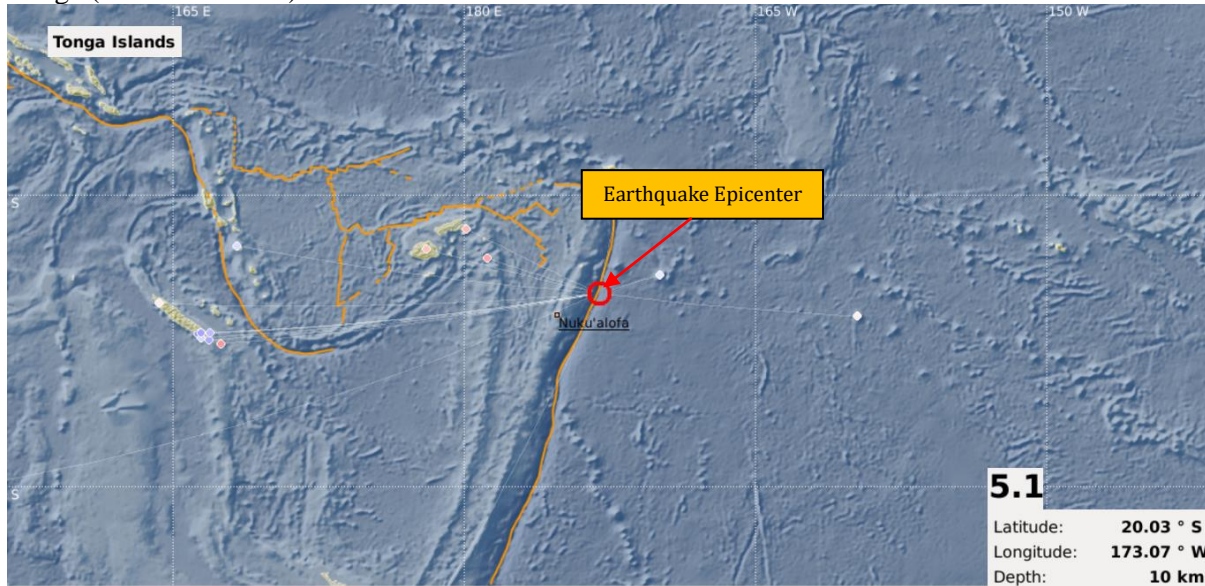




**EARTHQUAKE INFORMATION RELEASE NO. 357/17**

An earthquake occurred this morning at 11:43:25 AM local time, 248 km NE from Nuku'alofa, Tonga.(MRD/ORSNET)



*i) Tabulated Results*

Description	Localization
<ul style="list-style-type: none"> <li>Date:04/08/17</li> <li>Time: 11:43:25 AM</li> <li>Magnitude: 5.1 ML</li> <li>Depth: 10 km</li> </ul>	<ul style="list-style-type: none"> <li>Tonga Islands Region</li> <li>Latitude: 20.03°S</li> <li>Longitude: 173.07°W</li> <li><b>Offshore Earthquake</b></li> </ul>
References	
<ul style="list-style-type: none"> <li>248 km NE from Nukualofa, Tonga.</li> <li>346 km SW from Alofi, Niue.</li> <li>921 km SE from Suva, Fiji.</li> </ul>	

**Evaluation**

A **moderate** earthquake with **shallow depth** source location occurred in the Tonga Islands Region. However, it does not pose any immediate threat to the Fiji region.

This serves as notification only and will keep monitoring for any further updates.

For further information's and queries you are advised to contact the Seismology Unit of the Mineral Resources Department on landline 3381611, mobile 9906165 or fax 3370039/3383910.

*L. Bola*

for Director Mineral Development  
Seismology Unit,  
Mineral Resources Department  
04/08/17