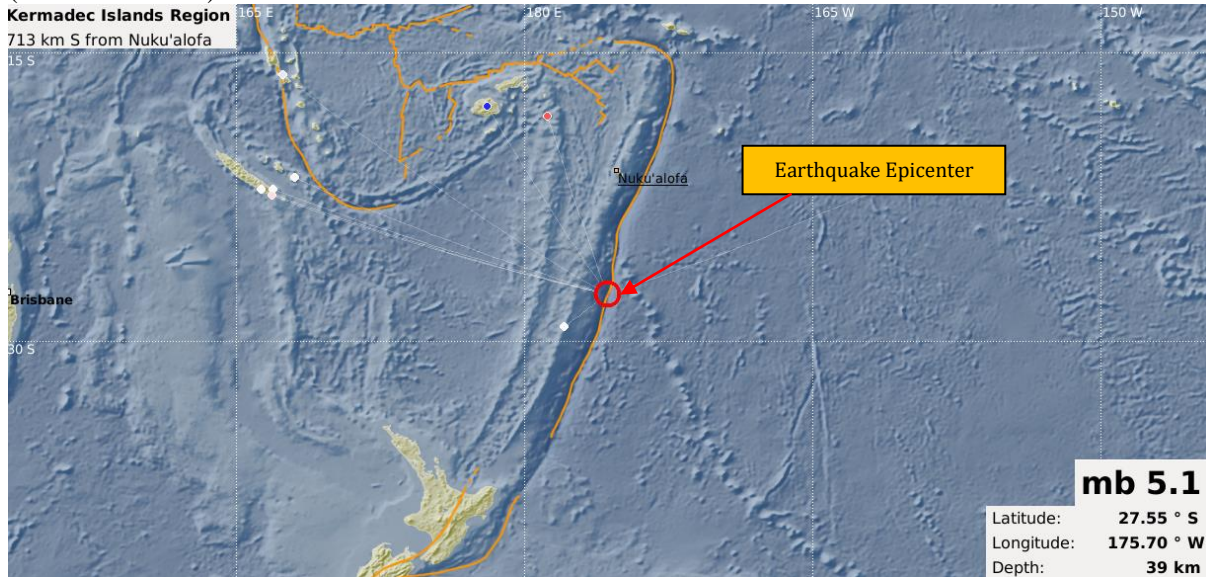




EARTHQUAKE INFORMATION RELEASE NO. 329/17

An earthquake occurred this mid-day today at 00:57:30 PM local time, 713 km S from Nukualofa. (MRD/ORSNET)



i) Tabulated Results

Description	Localization
<ul style="list-style-type: none"> Date: 14/07/17 Time: 00:57:30 PM Magnitude: 5.1 ML Depth: 39 km 	<ul style="list-style-type: none"> Kermadec Island Region Latitude: 27.55° S Longitude: 175.70° W Offshore Earthquake
References	
<ul style="list-style-type: none"> 713 km S from Nukualofa 292 km NE from Raoul Island, NZ. 1,203 km SW from Suva, Fiji. 	

Evaluation

A **moderate size** earthquake with **shallow depth** source location occurred in the Kermadec Island region. However, it does not pose any immediate threat to the Fiji region.

This serves as notification only and will keep monitoring for any further updates.

For further information's and queries you are advised to contact the Seismology Unit of the Mineral Resources Department on landline 3381611, mobile 9906165 or fax 3370039/3383910.

Lr Rawace

for Director Mineral Development
Seismology Unit,
Mineral Resources Department
14/07/17