

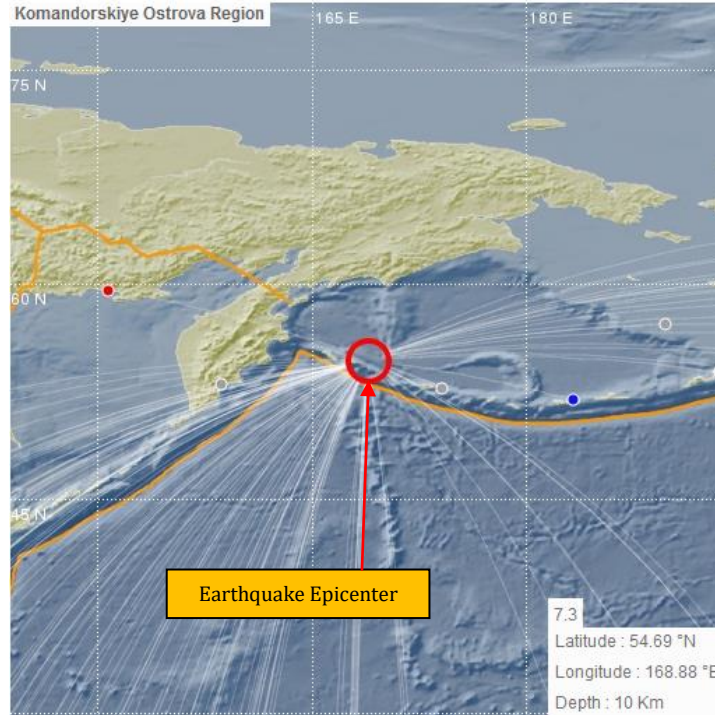


MINERAL RESOURCES DEPARTMENT
SEISMOLOGY UNIT



EARTHQUAKE INFORMATION RELEASE NO. 338/17

An earthquake occurred this morning at 11:34:16 AM local time, 694 km SE from Petropavlovsk-Kamchatskiy, Russia. (MRD/ORSNET)



i) Tabulated Results

Description	Localization
<ul style="list-style-type: none">• Date: 18/07/17• Time: 11:34:16 AM• Magnitude: 7.3 MW• Depth: 10 km	<ul style="list-style-type: none">• Komandorskiye Ostrova Region• Latitude: 54.69° N• Longitude: 168.88 °E• Off shore Earthquake
References	
<ul style="list-style-type: none">• 694 km SE from Petropavlovsk-Kamchatskiy, Russia.• 4, 523 km NW from Vancouver, Canada.• 8, 119 km SSW from Suva, Fiji.	

Evaluation

A **major** earthquake with a **shallow depth** source location occurred in the Komandorskiye Ostrova Region, Russia. However, it does not pose any immediate threat to the Fiji region.

This serves as notification only and will keep monitoring for any further updates. For further information's and queries you are advised to contact the Seismology Unit of the Mineral Resources Department on landline 3381611, mobile 9906165 or fax 3370039/3383910.

K. Raiwako

for Director Mineral Development,
Seismology Unit,
Mineral Resources Department
18/07/17