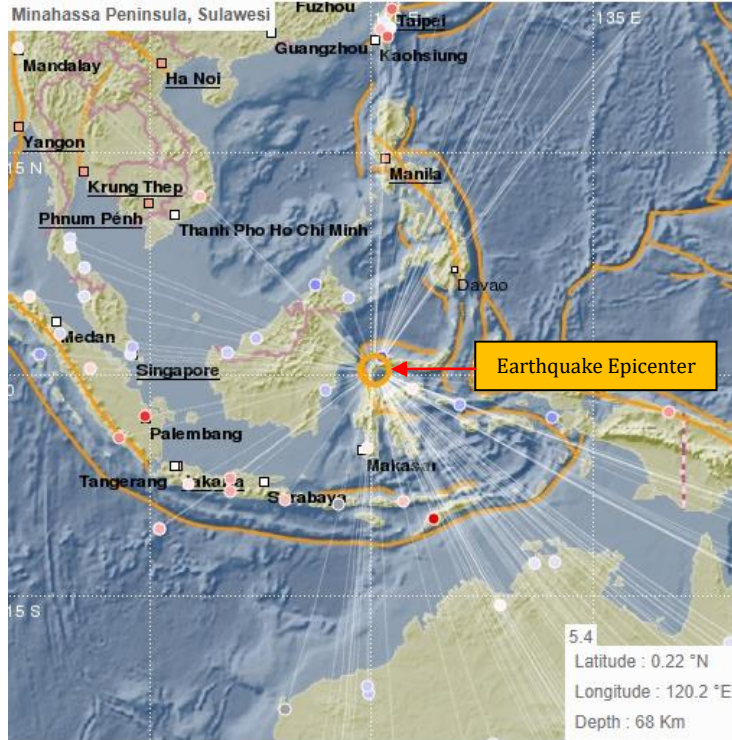




**EARTHQUAKE INFORMATION RELEASE NO. 343/17**

An earthquake occurred this evening at 07:55:48 PM local time, 90 km W from Minahassa Peninsula, Sulawesi, Indonesia.  
(MRD/ORSNET)



***i) Tabulated Results***

Description	Localization
<ul style="list-style-type: none"> <li>• Date: 23/07/17</li> <li>• Time: 07:55:48 PM</li> <li>• Magnitude: 5.4 ML</li> <li>• Depth: 68 km</li> </ul>	<ul style="list-style-type: none"> <li>• Indonesia Region</li> <li>• Latitude: 0.22° N</li> <li>• Longitude: 120.2 °E</li> <li>• <b>Offshore Earthquake</b></li> </ul>
References	
<ul style="list-style-type: none"> <li>• 90 km W from Minahassa Peninsula, Sulawesi, Indonesia.</li> <li>• 1,638 km NE from Jakarta, Indonesia.</li> <li>• 6,689 km NW from Suva, Fiji.</li> </ul>	

**Evaluation**

A **moderate** size earthquake with an **intermediate depth** source location occurred in the Indonesia Region. However, it does not pose any immediate threat to the Fiji region.

This serves as notification only and will keep monitoring for any further updates.

For further information's and queries you are advised to contact the Seismology Unit of the Mineral Resources Department on landline 3381611, mobile 9906165 or fax 3370039/3383910.

*V. Rasouso*

for Director Mineral Development,  
Seismology Unit,  
Mineral Resources Department  
23/07/17