

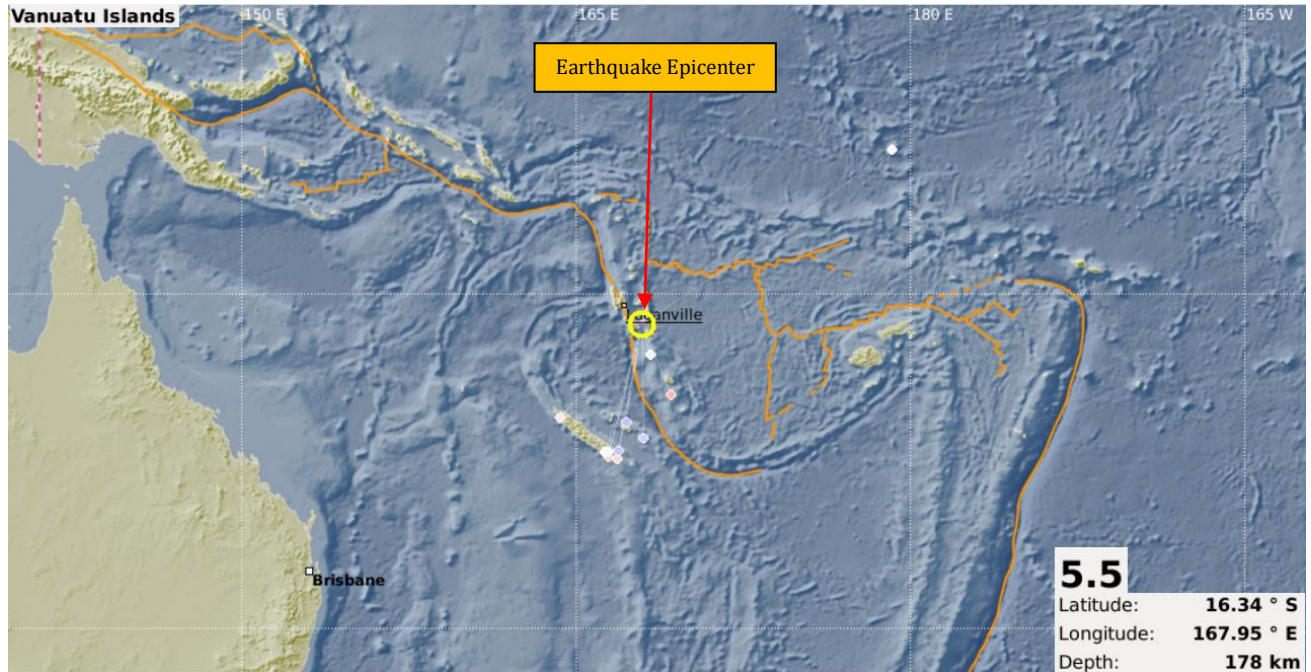


MINERAL RESOURCES DEPARTMENT  
SEISMOLOGY UNIT



**EARTHQUAKE INFORMATION RELEASE NO. 398/17**

An earthquake occurred this afternoon at 02:50:03 PM local time, 124 km SE from Luganville, Vanuatu. (MRD/ORSNET).



*i) Tabulated Results*

| Description   | Localization   |
|---|--|
| <ul style="list-style-type: none"><li>• Date: 05/09/17</li><li>• Time: 02:50:03 PM</li><li>• Magnitude: 5.5 ML</li><li>• Depth: 178 km</li></ul>                                | <ul style="list-style-type: none"><li>• Vanuatu Islands</li><li>• Latitude: 16.34° S</li><li>• Longitude: 167.95° E</li><li>• <b>Offshore Earthquake</b></li></ul> |
| References  |  |
| <ul style="list-style-type: none"><li>• 124 km SE from Luganville, Vanuatu.</li><li>• 676 km NNE from Noumea, New Caledonia.</li><li>• 1, 136 km WNW from Suva, Fiji.</li></ul> |  |

**Evaluation**

A **moderate** earthquake with **deep depth** source location occurred in the Vanuatu Islands region. However, it does not pose any immediate threat to the Fiji region.

This serves as notification only and will keep monitoring for any further updates.

For further information's and queries you are advised to contact the Seismology Unit of the Mineral Resources Department on landline 3381611, mobile 9906165 or fax 3370039/3383910.

*K. Raiwako*

for Director Mineral Development  
Seismology Unit,  
Mineral Resources Department  
05/09/17