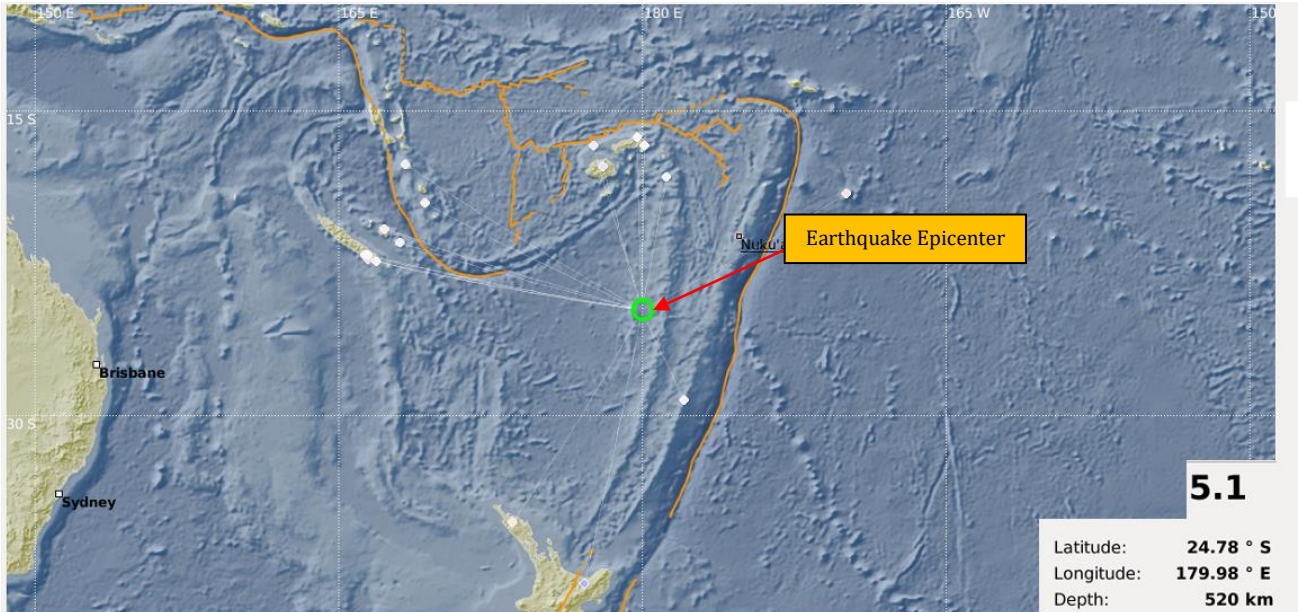




EARTHQUAKE INFORMATION RELEASE NO. 400/17

An earthquake occurred this afternoon at 12:24:32 PM local time, 496 km SSW from Doi village, Ono-i-Lau. (MRD/ORSNET).



i) Tabulated Results

Description	Localization
<ul style="list-style-type: none"> • Date: 07/09/17 • Time: 12:24:32 PM • Magnitude: 5.1 ML • Depth: 520 km 	<ul style="list-style-type: none"> • Fiji Region • Latitude: 24.78° S • Longitude: 179.98° E • Offshore Earthquake
References	
<ul style="list-style-type: none"> • 496 km SSW from Doi village, Ono-i-Lau. • 635 km NW from Nukualofa, Tonga • 741 km SSE from Suva, Fiji. 	

Evaluation

A **moderate** earthquake with **deep depth** source location occurred in the Fiji region. However, it does not pose any immediate threat to the region.

This serves as notification only and will keep monitoring for any further updates.

For further information's and queries you are advised to contact the Seismology Unit of the Mineral Resources Department on landline 3381611, mobile 9906165 or fax 3370039/3383910.

V. Delai

for Director Mineral Development
Seismology Unit,
Mineral Resources Department
07/09/17