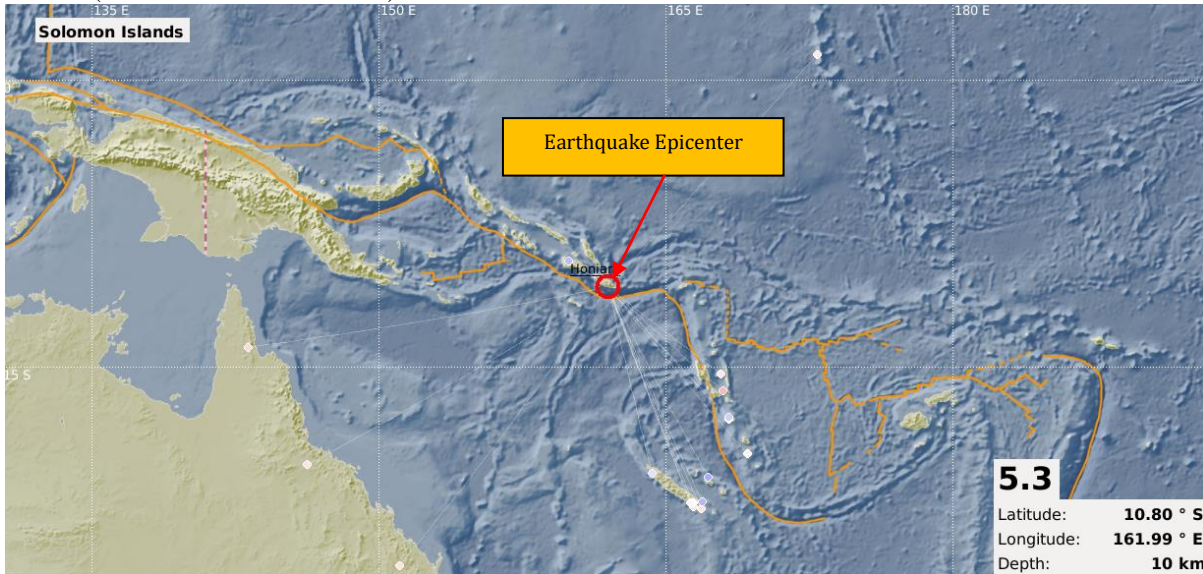




EARTHQUAKE INFORMATION RELEASE NO. 411/17

An earthquake occurred this morning at 03:21:37 AM local time, 274 km SE from Honiara, Solomon Island. (Source: MRD/ORSNET)



i) Tabulated Results

Description	Localisation
<ul style="list-style-type: none"> • Date: 14/09/17 • Time: 03:21:37 AM • Magnitude: 5.3 ML • Depth: 10 km 	<ul style="list-style-type: none"> • Solomon Islands Region • Latitude: 10.80° S • Longitude: 161.99° E • Offshore Earthquake
References	
<ul style="list-style-type: none"> • 274 km SE from Honiara, Solomon Island. • 1,027 km NNW from Port Vila, Vanuatu. • 1,951 km NW from Suva, Fiji. 	

Evaluation

A **moderate size** earthquake with **shallow depth** source location occurred in the Solomon Island region. However, it does not pose any immediate threat to the Fiji region.

This serves as notification only and will keep monitoring for any further updates.

For further information's and queries you are advised to contact the Seismology Unit of the Mineral Resources Department on landline 3381611, mobile 9906165 or fax 3370039/3383910.

N. Nailatica

for Director Mineral Development
Seismology Unit,
Mineral Resources Department
14/09/17