

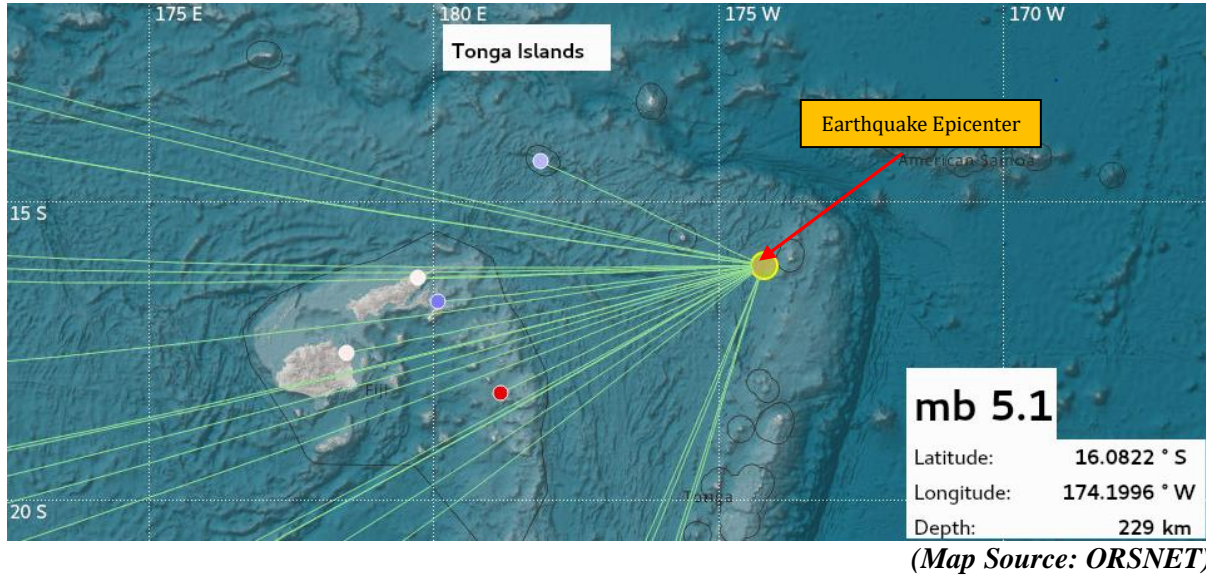


MINERAL RESOURCES DEPARTMENT
SEISMOLOGY UNIT



EARTHQUAKE INFORMATION RELEASE NO. 329/22

An earthquake occurred this morning at 05:54:26 AM local time, 269 km N from Neiafu, Tonga. (ORSNET/IRD)



i) Tabulated Results

Description	Localization
<ul style="list-style-type: none">Date: 29/10/2022Time: 05:54:26 AMMagnitude: 5.1Depth: 229 km	<ul style="list-style-type: none">269 km N from Neiafu, Tonga .Offshore Earthquake“No Tsunami Threat”
Reference	
<ul style="list-style-type: none">269 km N from Neiafu, Tonga347 km SW from Apia, Samoa.826 km NNE from Suva, Fiji.	

Evaluation

A **moderate** earthquake with a **deep depth** source location 269 km N from Neiafu, Tonga. However this **does not** pose any immediate tsunami threat to the Fiji region.

This serves as a notification only and will keep monitoring for any further updates. For further information and queries, you are advised to contact the Seismology Unit of the Mineral Resources Department on landline 3381611, mobile 9906165 or fax 3370039/3383910.

L. Samuela

for Acting Director Mineral Development
Mineral Resources Department
29/10/2022